

KAYNAK BOYUNLU FLANŞ PN 25



TS EN 1092 - 1 + A1 TİP 11
DIN 2634

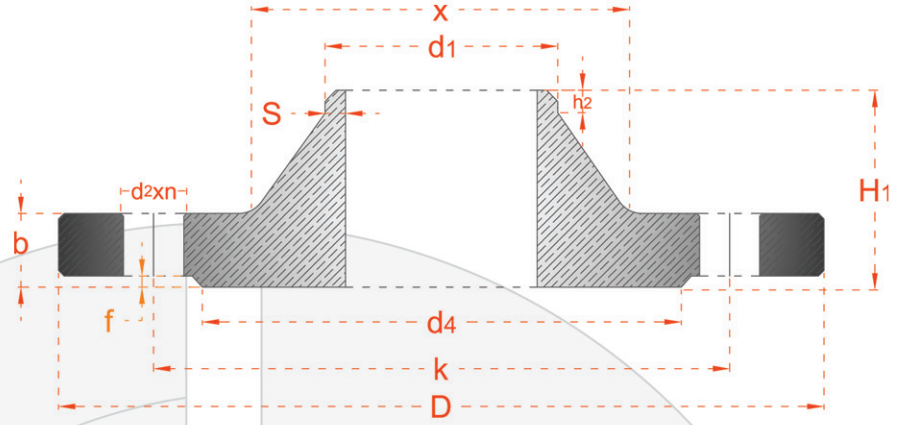


E.M.P.
www.emp.com.tr
www.empflans.com

WELDING NECK FLANGE PN 25



EN 1092 - 1 + A1 TYPE 11
DIN 2634



BORU/PIPE	FLANŞ /FLANGE						BOYUN/ NECK			RAISED FACE		DELİKLER/DRILLINGS			AĞIRLIK WEIGHT	
	DN	d1	D	b		H ₁		X	s	h2	d ₁	f	k	n		vida /screw
EN 1092-1				DIN	EN 1092-1	DIN										
10	17.2	90	16	16	35	35	28	1.8	6	40	2	60	4	M12	14	0.7
15	21.3	95	16	16	38	38	32	2.0	6	45	2	65	4	M12	14	0.8
20	26.9	105	18	18	40	40	40	2.3	6	58	2	75	4	M12	14	1.1
25	33.7	115	18	18	40	40	46	2.6	6	68	2	85	4	M12	14	1.2
32	42.4	140	18	18	42	42	56	2.6	6	78	2	100	4	M16	18	1.8
40	48.3	150	18	18	45	45	64	2.6	7	88	3	110	4	M16	18	2.3
50	60.3	165	20	20	48	48	75	2.9	8	102	3	125	4	M16	18	2.8
65	76.1	185	22	22	52	52	90	2.9	10	122	3	145	8	M16	18	3.7
80	88.9	200	24	24	58	58	105	3.2	12	138	3	160	8	M16	18	4.8
100	114.3	235	24	24	65	65	134	3.6	12	162	3	190	8	M20	22	6.5
125	139.7	270	26	26	68	68	162	4.0	12	188	3	220	8	M24	26	9.0
150	168.3	300	28	28	75	75	192	4.5	12	218	3	250	8	M24	26	11.8
200	219.1	360	30	30	80	80	244	6.3	16	278	3	310	12	M24	26	17.0
250	273.0	425	32	32	88	88	298	7.1	18	335	3	370	12	M27	30	24.4
300	323.9	485	34	34	92	92	352	8.0	18	395	4	430	16	M27	30	31.2
350	355.6	555	38	38	100	100	398	8.0	20	450	4	490	16	M30	33	47.2
400	406.4	620	40	40	110	110	452	8.8	20	505	4	550	16	M33	36	61.7
450	457	670	46	42	110	110	500	8.8	20	550	4	600	20	M33	36	71.9
500	508	730	48	44	125	125	558	10	20	615	4	660	20	M33	36	89.6
600	610	845	48	46	125	125	660	11	20	720	5	770	20	M36	39	104.0
700	711	960	50	46	129	125	760	13	24	820	5	875	24	M39	42	136.0
800	813	1085	53	50	138	135	865	14	24	930	5	990	24	M45	48	186.0
900	914	1185	57	54	148	145	968	16	28	1030	5	1090	28	M45	48	236.0
1000	1016	1320	63	58	160	155	1070	18	28	1140	5	1210	28	M52	56	307.0

Ölçüler mm olarak verilmiştir.
Çelik ve paslanmaz üretilebilir.

Dimensions are in mm.
Steel and stainless steel can be produce.